



EHP50

Ex-Heating Plate / Finned Heater, self limiting:

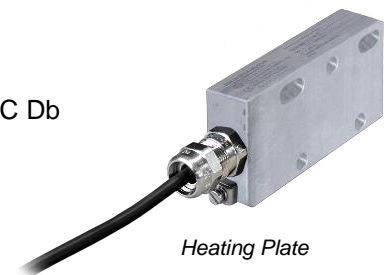
The electrical heating plate EHP50 is designed to heat valve blocks, protection boxes and small cabinets. Internally the heater contains a heating cartridge with self limiting temperature characteristics. By self-increasing the electrical resistance with rising ambient temperature, a continuous temperature regulation is achieved.

Options and Accessories:

- Metallic protection cover against touch
- O = Heating plate in standard design
- R = Heating plate with fins and mounting brackets
- F = Heating plate with failure switch T < 5°C opening (250VAC, 5A)
- B = Heating plate with fins, mounting brackets and failure switch
- Z = Special design: armoured cable or other options upon request

Marking:

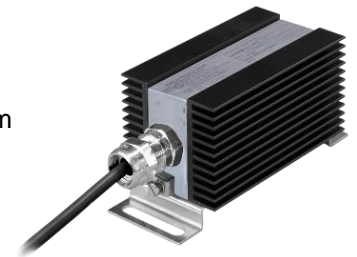
| | |
|----------------------------------|--------------------------------------|
| Gas: | II 2 G Ex db IIC T4 / T3 Gb |
| Dust: | II 2 D Ex tb IIIC T135°C / T200°C Db |
| EC Type Examination Certificate: | EPS 15 ATEX 1041 |
| IEC Ex Certificate: | IECEX EPS 15.0055 |
| EAC Ex Certificate: | RU C-DE.EX01.B.00032/19 |



Heating Plate

Technical Data:

| | |
|-----------------------------|---|
| Rated Voltage: | 110-250VAC |
| Max. Rated Current: | 0,5A |
| Rated Power: | EHP 50 T4: 50W / EHP 50 T3: 80W |
| Connection cable: | Silicone 3 / 5 x 1 mm ² , Ø 7 mm / 8,8 mm, 3 m |
| Weight without / with fins: | 0,8 kg / 1,3 kg |
| Ambient Temperature: | -60°C - +80°C |
| Degree of Protection: | IP 68 |
| Cable Gland | M20 x 1,5, Nickel Plated Brass |



Finned Heater

